

*Santa Bárbara de Nexe · Algarve*

# A BRAND NEW DEVELOPMENT



**Mapro Sociedade Mediação Imobiliária Lda.**

Edifício Mapro · Av. Alm. Mendes Cabeçadas · 8135-106 Almancil · Algarve, Portugal

Tel. (+351) 289 390 880 · info@maprorealestate.com

AMI License 317

[www.maprorealestate.com](http://www.maprorealestate.com)

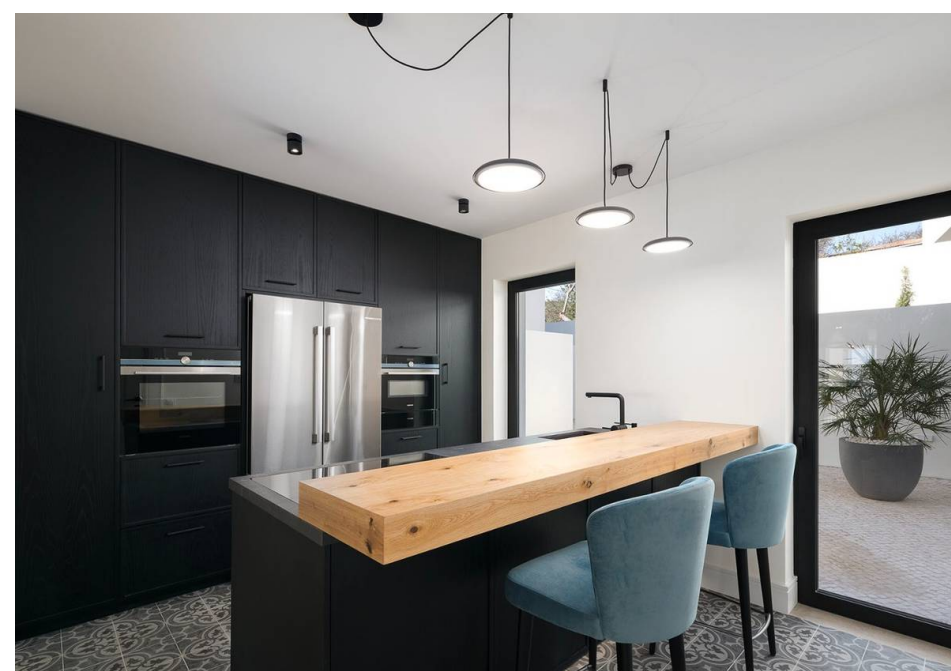
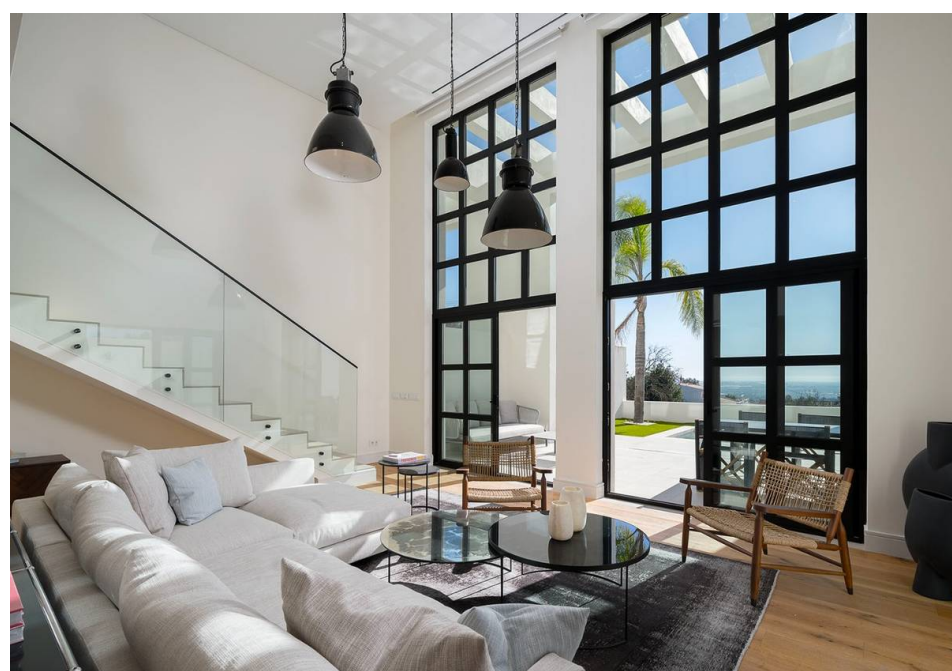




## A BRAND NEW DEVELOPMENT

A brand new development consisting of eight contemporary townhouses designed by the renowned and multi-award-winning architect, Jutta Hoehn, and built by Netos Construtores. The four bedroom properties are divided into four levels, offering spacious and luxurious living spaces.

On the ground floor you will find a well equipped kitchen with a pantry, an open-plan dining area, a guest wc and a living room. The ground floor is designed to provide a seamless flow between the kitchen, dining area, and living room, creating an inviting and sociable atmosphere for residents and guests. There are three bedrooms on the first floor, each with its own en-suite bathroom. This floor also features two terraces, one overlooking the pool and the other facing the back garden. These terraces offer breathtaking views and provide a private outdoor space for relaxation and enjoyment. The second floor is dedicated to the main suite, which is exceptionally spacious and luxurious. It includes an en-suite bathroom and is complemented by terraces on both sides. The main suite is designed to provide privacy and comfort, while also offering panoramic views of the surrounding area.



The lower ground level features a double garage, storage facilities, a living room, and provides access to a spacious terrace that is located near the pool and garden area. This level offers a comfortable living area and outdoor space for relaxation and entertainment.

Situated in Santa Barbara de Nexe, these newly built south-facing townhouses enjoy stunning ocean views. The orientation allows residents to take full advantage of natural light and provides a picturesque backdrop of the ocean, enhancing the overall ambiance of the properties.



P.O.A.

PRIX

REF 3778

### FAITS & CARACTÉRISTIQUES



350m<sup>2</sup>



331.10m<sup>2</sup>



4



5



CLASSE  
ÉNERGÉTIQUE

Propriétaire: Privé

Année de Constr. 2024

Jardin Terrace

Piscine Petite, Jacuzzi

Garage Double, Privé

Chauffage Chauffage au Sol  
(L'eau)

Air Conditionné Central

Alarme Oui

Meublé Non

Facilities Chargeur de  
Voiture Électrique, Volets  
Électriques

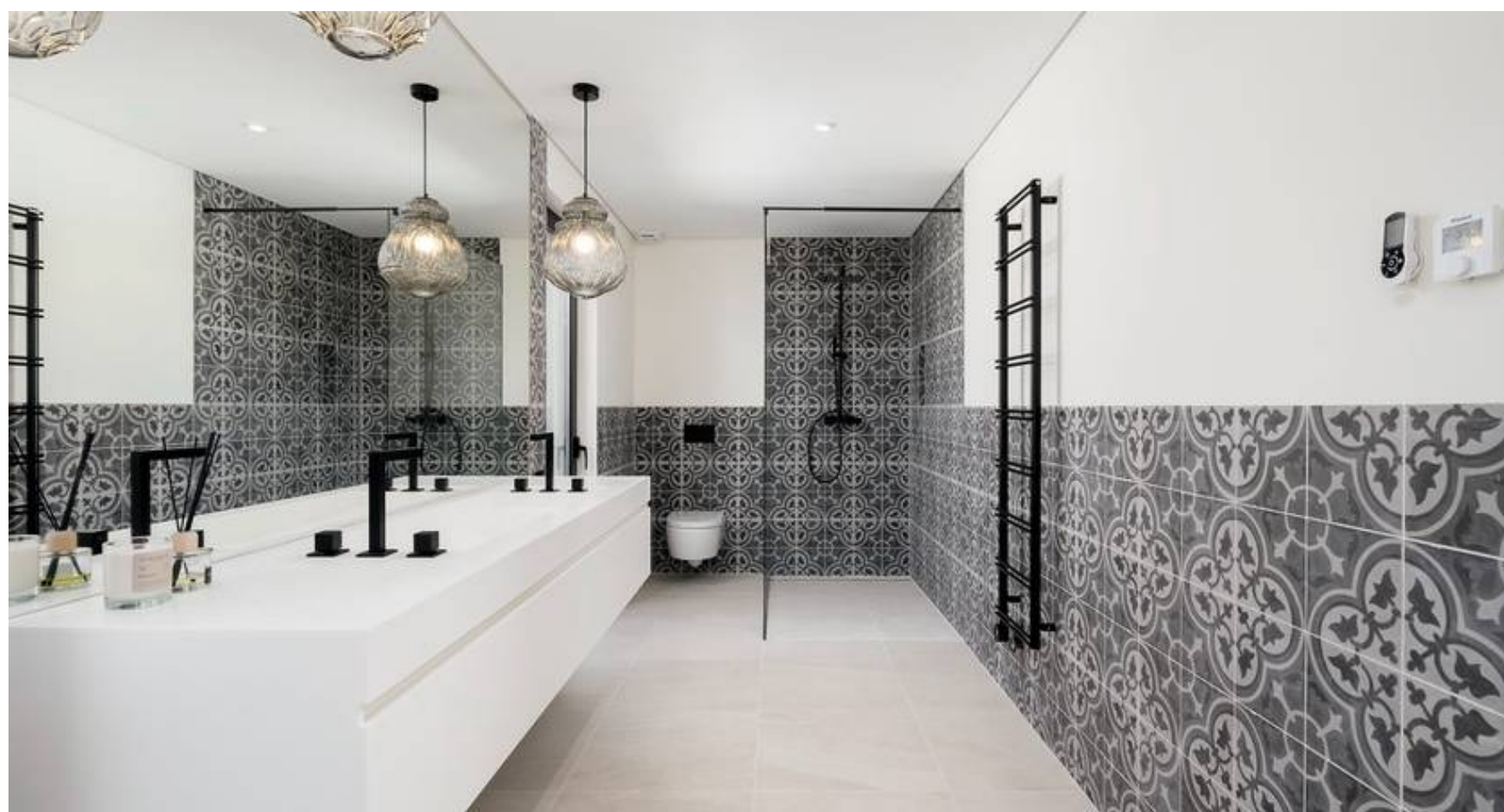
Caractéristiques Élévateur

Vues Mer Distant

Plage 16Km

Golf 7Km

Aéroport 13Km



NOTE IMPORTANTE: Les informations fournies servent seulement de référence, ne font partie d'aucun contrat et peuvent changer à tout moment.

