

Vilamoura · Algarve
**CONTEMPORARY
LIVING**



Mapro Sociedade Mediação Imobiliária Lda.

Edifício Mapro · Av. Alm. Mendes Cabeçadas · 8135-106 Almancil · Algarve, Portugal

Tel. (+351) 289 390 880 · info@maprorealestate.com

AMI License 317

www.maprorealestate.com

MAPRO | **Knight
Frank**
REAL ESTATE · IMOBILIÁRIA



CONTEMPORARY LIVING

Stunning semi-detached five-bedroom villa located in the prestigious Vilamoura area, walking distance to the marina and local amenities. This expansive property spans across three floors providing ample space and privacy. A central light well floods the interior with natural light, creating an ambience of brightness and warmth throughout the property.

The ground floor presents an impressive layout, featuring a private parking area, a grand entrance hall that sets the tone for the home's elegance, a bedroom with its private bathroom, and an additional bathroom for guests' convenience. The spacious living room is bathed in natural light and seamlessly connects to the outdoor pool area, creating a harmonious indoor-outdoor flow. The modern kitchen, fully fitted and equipped, offers direct access to dining and entertaining spaces.

Stepping outside, the inviting swimming pool is perfect for leisurely swims or basking in the Algarve sunshine. Adjacent to the pool, a covered terrace equipped with a barbecue offers an ideal setting for alfresco dining and entertaining guests.

On the first floor, there are three bedrooms, each boasting its own ensuite bathroom. Two of these bedrooms enjoy access to a shared terrace, where you can unwind and soak in panoramic views of the surrounding landscape. As you step into the lower level, there's a versatile storage area, a covered patio ideal for outdoor relaxation, and a comfortable ensuite bedroom, perfect for accommodating guests or family members seeking privacy.





€ 1.980.000

PRIX

REF 3895

FAITS & CARACTÉRISTIQUES



336m²



601m²



5



6



CLASSE
ENERGÉTIQUE

Propriétaire: Privé

Piscine Oui

Air Conditionné Ducted System

Meublé Non

Caractéristiques Barbecue

Golf Walking Distance

Jardin Oui

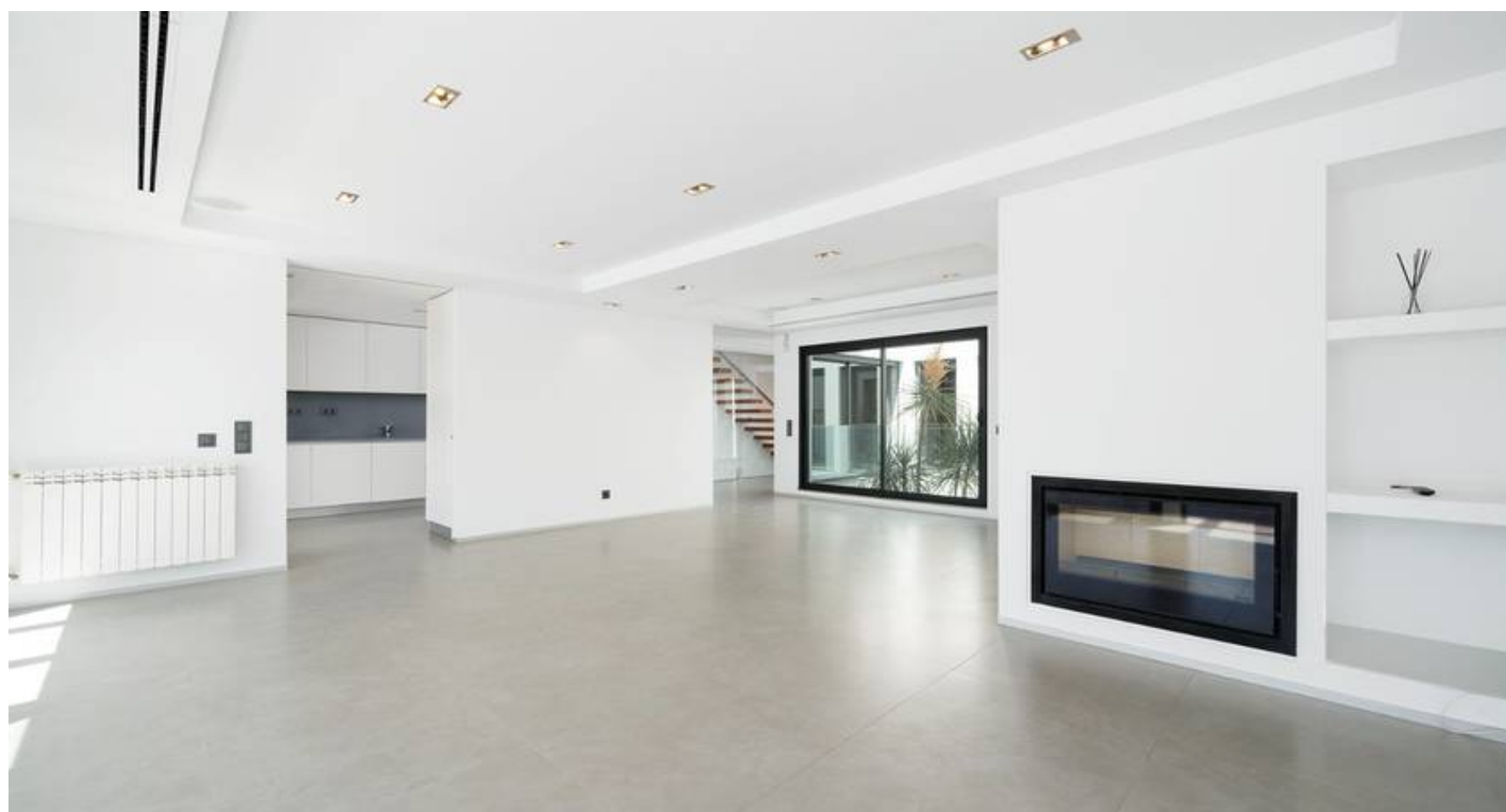
Chauffage Radiateurs, Ducted System

Cheminée Oui

Facilities Photovoltaic Panels

Plage Walking Distance

Aéroport 20Km



NOTE IMPORTANTE: Les informations fournies servent seulement de référence, ne font partie d'aucun contrat et peuvent changer à tout moment.

